



DEEP
GREEN



INTRODUCING

DG 01

MANCHESTER DATA CENTRE

SERVING 400KW OF HIGH DENSITY
COLOCATION CAPACITY

RFS: Q1 2026

Size: 240m²

Building type: Purpose-built data centre

THE DATA CENTRE THAT REUSES FREE HEAT

In the heart of the Northern Powerhouse, this state-of-the-art data centre is co-located with move Urmston Leisure Centre, where recaptured heat energy is transferred to the facility's two swimming pools.

Engineered for High Density

Purpose-built to handle the most demanding AI and HPC workloads, with racks supporting up to 100 kW each, delivering future-proof capacity without compromise

Industry-leading PUE

Engineered for efficiency, DG01 achieves a market-leading PUE of 1.15, lowering the operational costs of Air and DLC cooling options

Strategic 'Northern Powerhouse' location

Conveniently located in Trafford, Greater Manchester, DG01 offers strong connectivity and close links to leading UK academia, research and enterprise hubs, making it the ideal home for resilient HPC and AI infrastructure in the North

Carbon reduction at scale

DG01 directly integrates with move Urmston Leisure Centre, avoiding 150 tCO₂e annually, while eliminating your Scope 3 emissions

Heat reuse for community benefit

The site's recaptured heat saves the leisure centre an estimated £80,000 in energy costs annually, meaning critical community investments can be made elsewhere

Social good & local partnerships

In addition to savings on energy, local communities benefit from our Swim Hours programmes, including supporting access to leisure facilities, and Deeper Green, our unique carbon removals programme

POWERED BY

octopus energy
generation



DEEP
GREEN

General Information

Number of data floors: 1
Number of IT zones: 1
Separate delivery bays: 1
Target PUE: 1.15
Building tenure: Leasehold

Security

Controlled access security system
Full internal and external CCTV
Audited access procedure
Electronic access gate
24/7 CCTV Monitoring

Fire Detection and Suppression

Novec fire suppression system

Cooling

Type of cooling system: Liquid-based system
with heat recovery
Rear Door Coolers
Maximum cooling capacity (kW): 400kW
Cooling redundancy: N+1

Power

Total incoming feed capacity (kVA): 650 kVA
Available power: 400 kW
Substations: 1

Connectivity

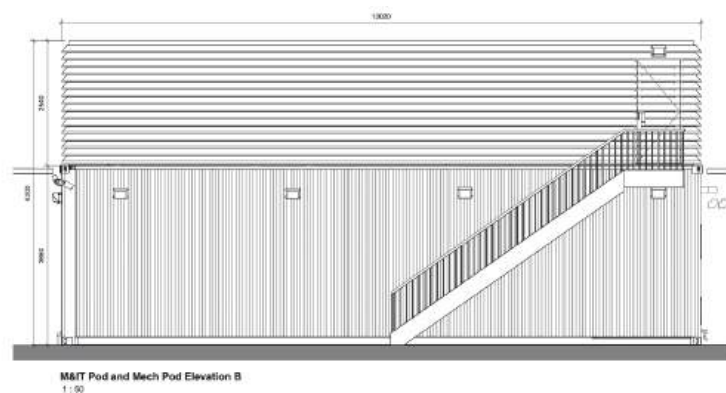
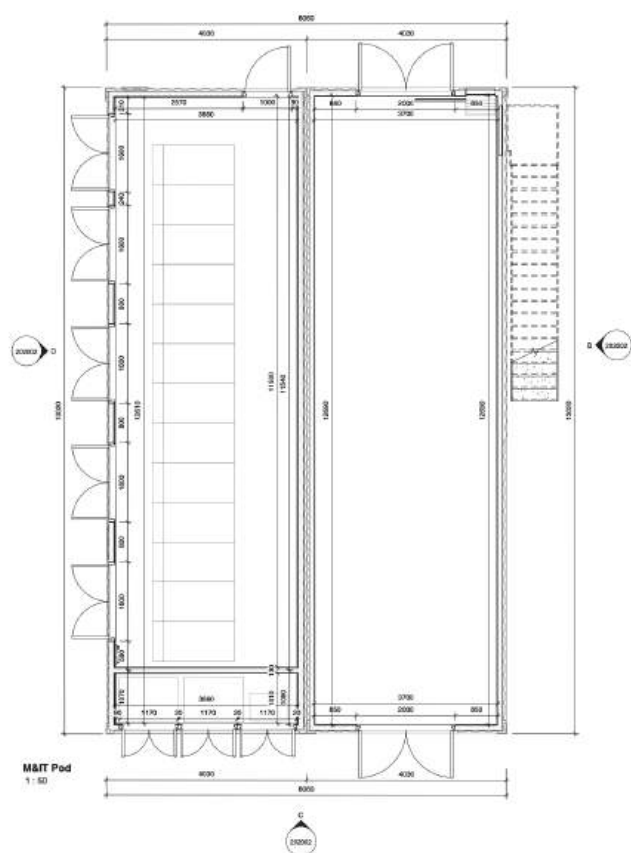
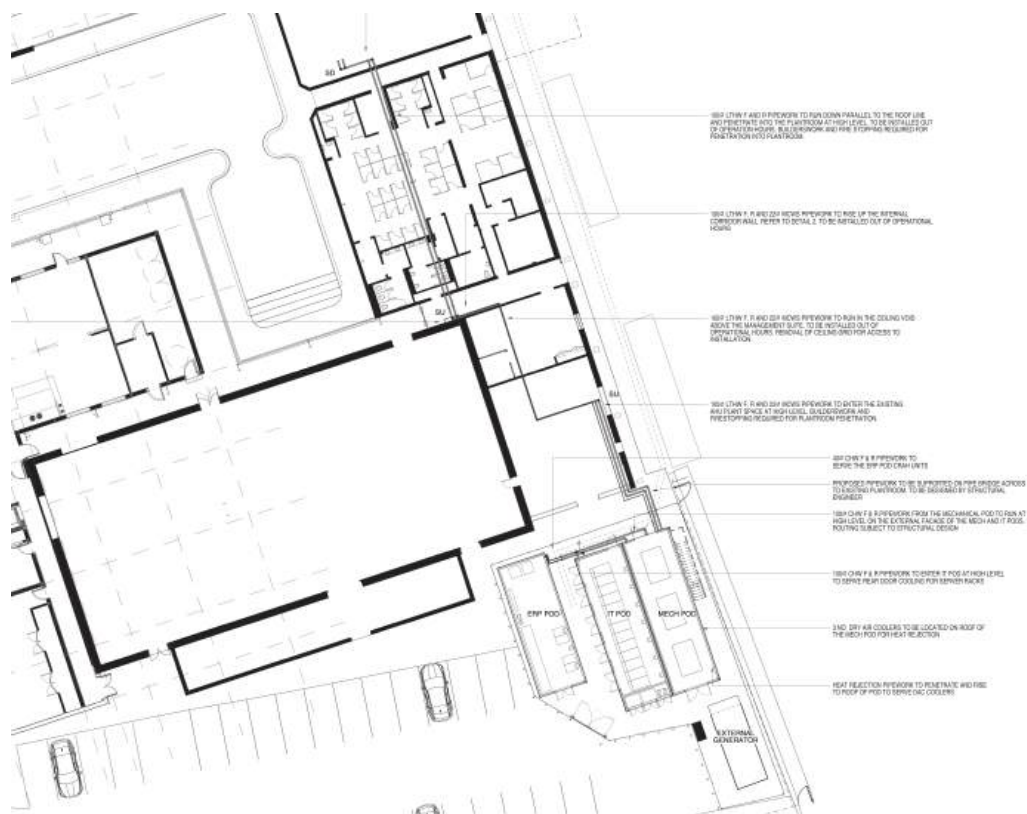
Diverse fibre routes: Two physically separated paths
Number of diverse entry points into building: 2
Number of meet me rooms: 2
Connected Carriers: 6+ carriers available on site + DF connectivity
Latency to nearest MSFT/AWS on-ramp (round-trip, ms): 2-5 ms
On-site carrier/dark-fibre availability: Dark fibre with diverse routes to metro Manchester. Lit services from Zayo, Virgin Media etc
Latency to major hubs (ms): 2-5 ms

Certifications

ISO27001 Information Security Management
ISO9001 Quality Management
Cyber Essentials
Cyber Assurance



Site plan



Contact details

